



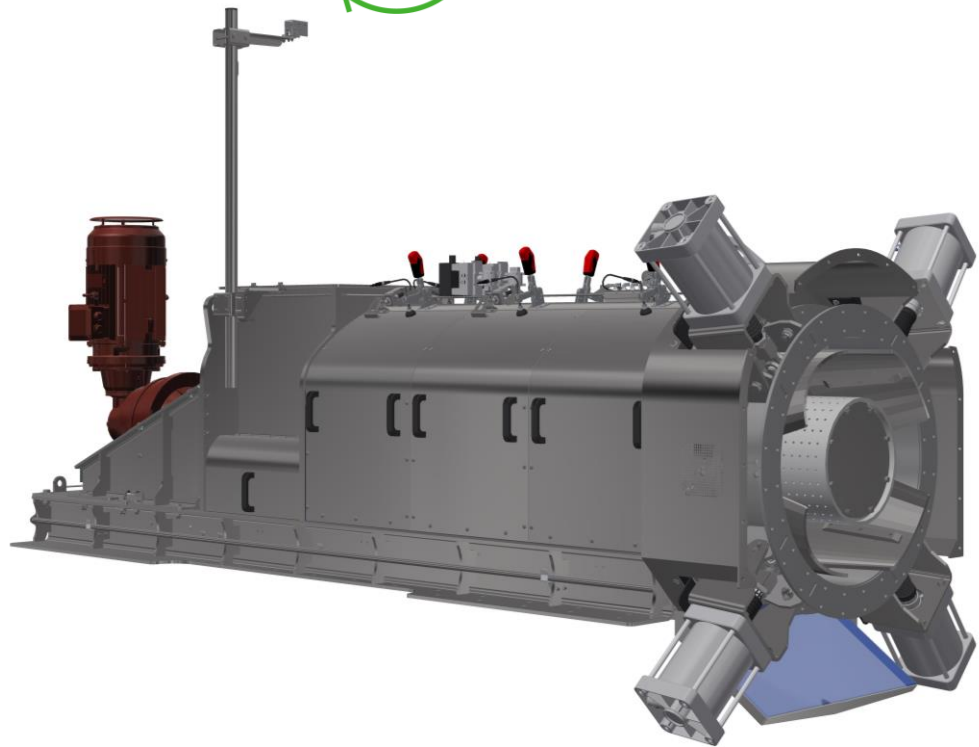
# smicon

improve the process

improve the future



## DEPACKAGING

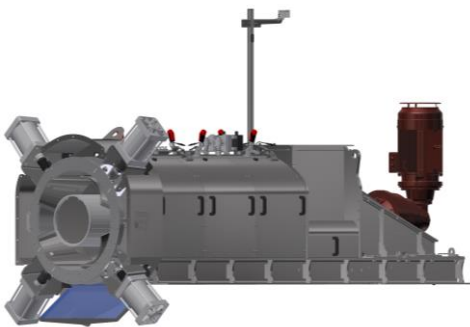


### SP600

The Smicon SP600 is a robust system of which the housing and chassis are made entirely of stainless steel. The SP600 is perfectly fitted as a standalone depackaging machine for a wide variety of products or separates the moisture from already processed packaging which results in a lighter packaging flow and a saving of up to 50% in disposal costs. In addition, the separation process ensures a higher yield of organic product by squeezing out the packaging. The SP600 is suitable for a high capacity (30 m<sup>3</sup> per hour) and a more controllable process due to the large diameter of the screw press.



- ▶ Automatic control for optimal efficiency and minimal wear & tear ▶ Evenly distributed pressure for optimal results
- ▶ Housing and chassis made entirely of stainless steel ▶ Parts can be exchanged easily



**INPUT**  
PACKAGING  
STREAM SMIMO,  
PACKED  
FOODSTUFFS



**OUTPUT**  
LIGHTWEIGHT  
PACKAGING AND  
ORGANIC FLOW

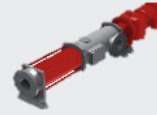
# SP600

## TECHNICAL DATA

Dimensions	
Machine general	4100x1670x1490 mm (LxWxH)
Infeed	564x604 mm (LxW)
Outfeed (organic)	858x2219 mm (LxW)
Maximum outfeed (packaging)	Ø 600 mm
Total sieving area	3,72 m <sup>3</sup>
Transport dimensions	4500x2000x2000 mm (LxWxH)
Transport volume	18 m <sup>3</sup>
Clearance area	6100x3670x2490 mm (LxWxH)
Weight	
Weight	3500 kg
Floor load per foot	9 kN
Transport weight	3600 kg
Drive	
Power	22 kW
RPM shaft	11 RPM
IP-class	IP66
Control	
Control system	Control cabinet with frequency inverter or software block
Product information	
Capacity	30 m <sup>3</sup> /hour
Product temperature	1-70 °C
Maximum ball passage	Ø 100 mm
Other specifications	
A-weighted sound pressure level	<80 dB
C-weighted instantaneous sound pressure	<130 dB
Technical data is specified according to the machine without accessories	

### Accessories

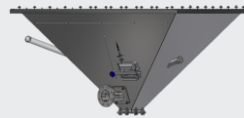
#### Pump organic output



#### Frame



#### Tank organic output



#### Platform



### Clearance area and illustrations

